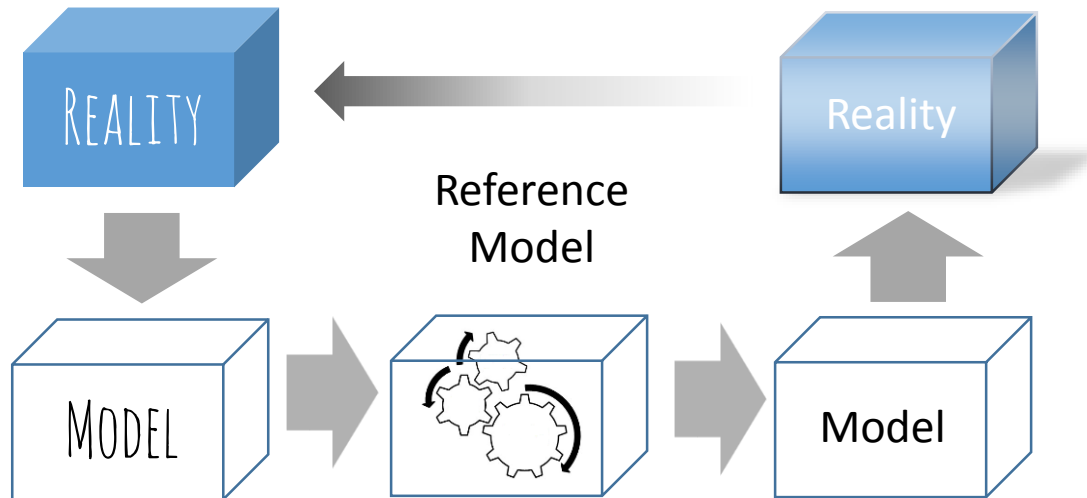
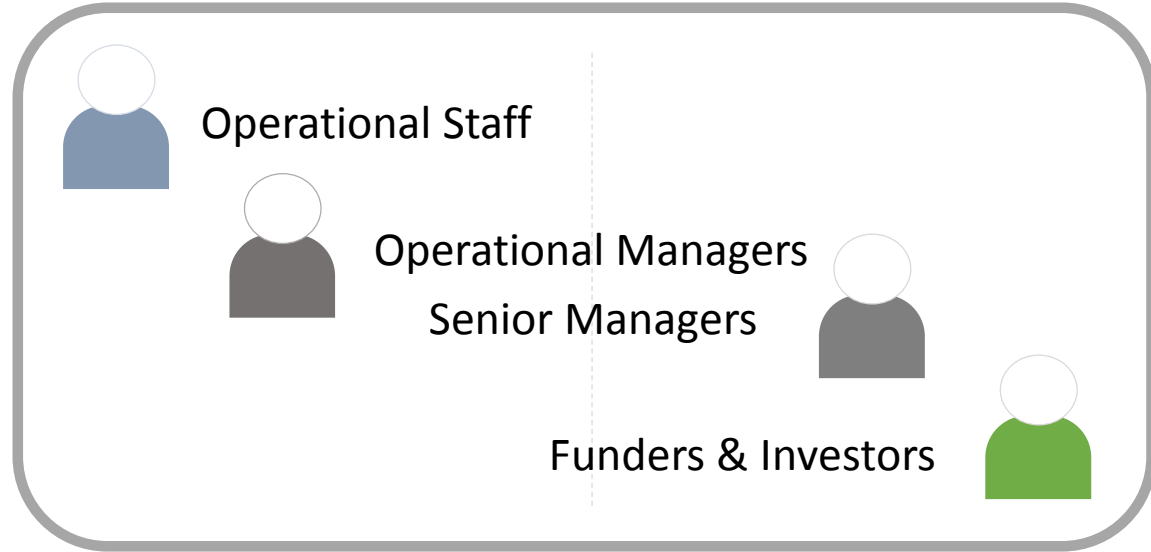


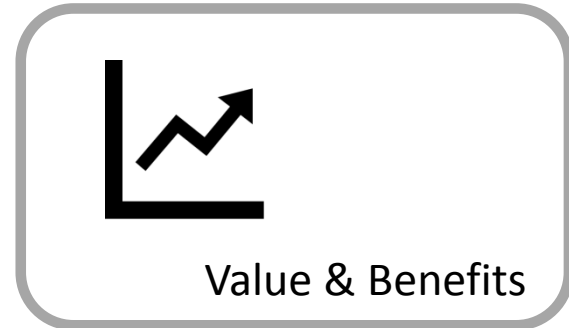
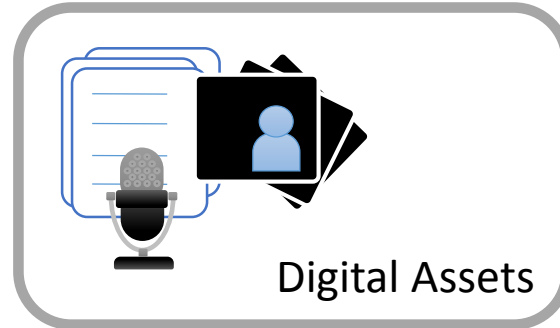
## Why do modelling ...?



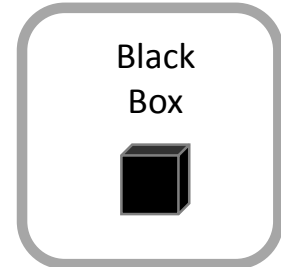
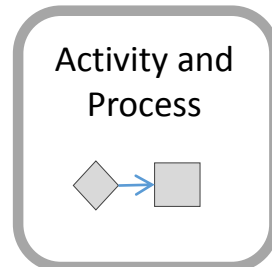
Perspective ...

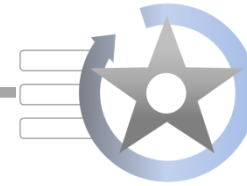


Focusing on ...



Curation as ...





# ECONOMIC MODEL

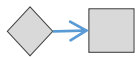
Maintaining stakeholder incentives and the flow of resources to sustain assets



Digital Assets

COSTS  
MODEL

Activity and  
Process



Time and  
Effort



BENEFITS  
MODEL



Value & Benefits

Risk  
Management



Curation as  
Black Box

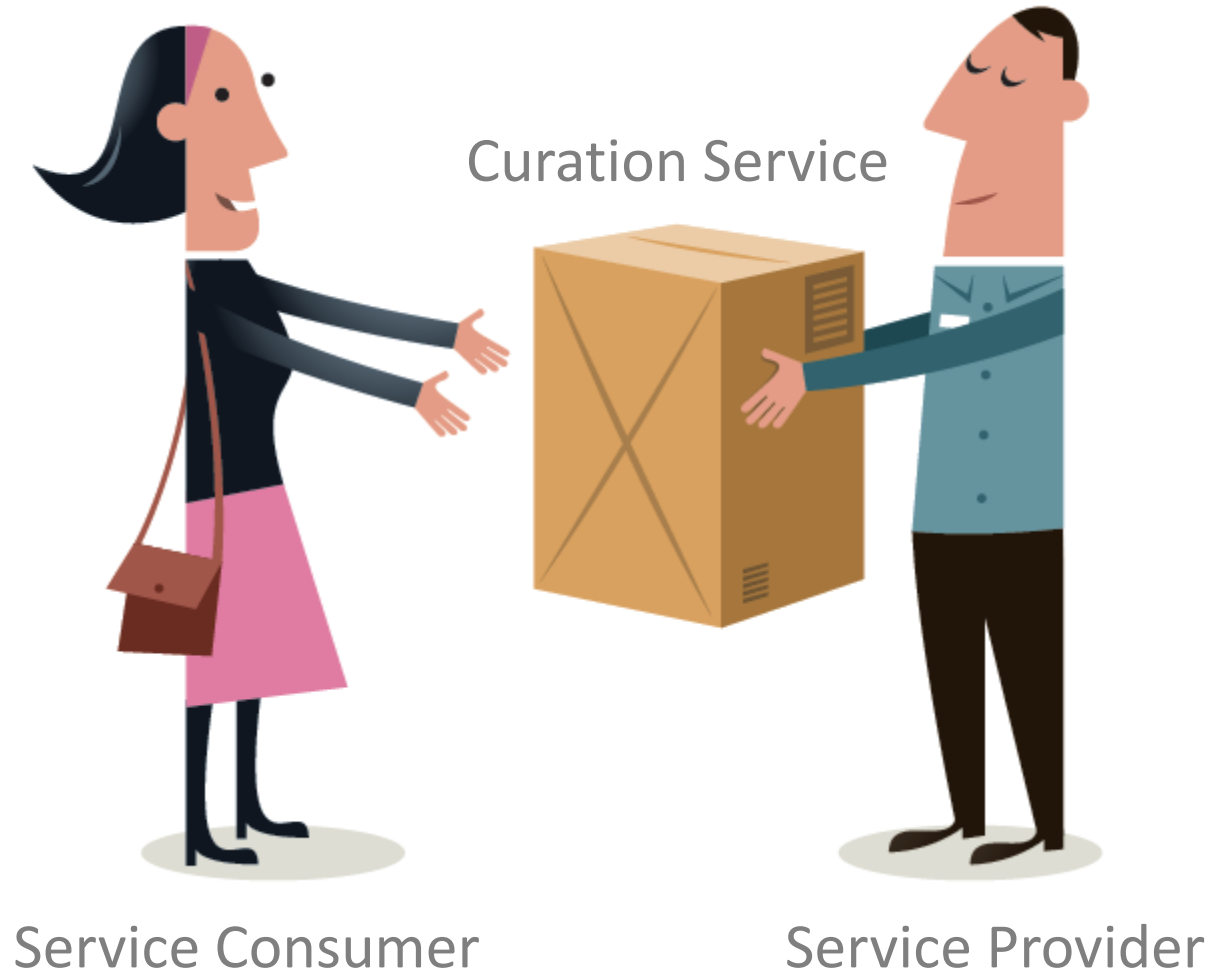


# Conceptual Cost Model for Digital Curation



Ulla Bøgvad Kejser  
The Royal Library, Denmark

# Demand and Supply Side



# Roles and Responsibilities

## Consumer

General/Financial Manager

**Responsible for the curation of assets**



Other Business Processes



Curation Service

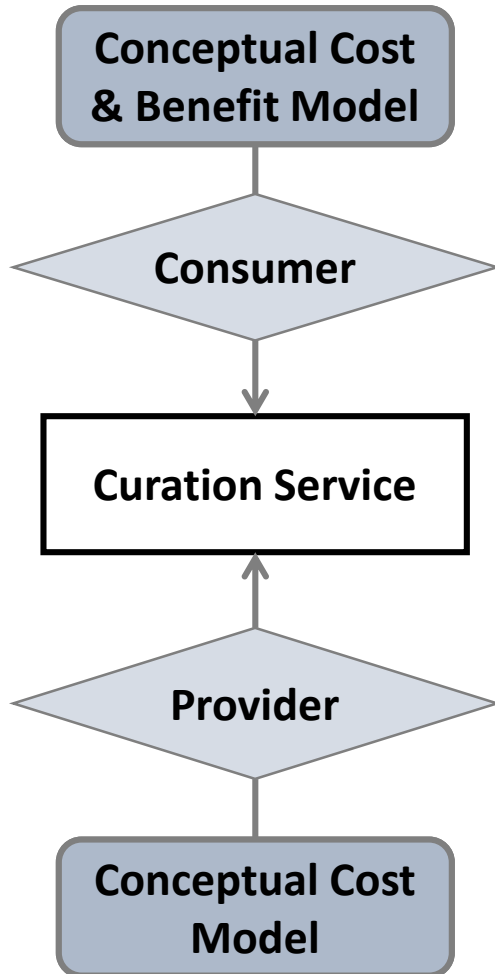
## Provider

Repository Administrator

**Responsible for the curation service**

Service Level Agreement

# The Conceptual Model



- **Consumer perspective:**
  - Business model for curation of information assets
    - Costs of required service – cost drivers?
    - Benefits/revenues of applying service – value in relation to business objectives and risks?
- **Provider perspective:**
  - Business model for the curation service
    - Costs of providing service at specific service levels (quality) – cost drivers?
    - Benefits/revenues of providing the service?

# Cost and Service Level (Quality)





Artefactual support services for Archivematica

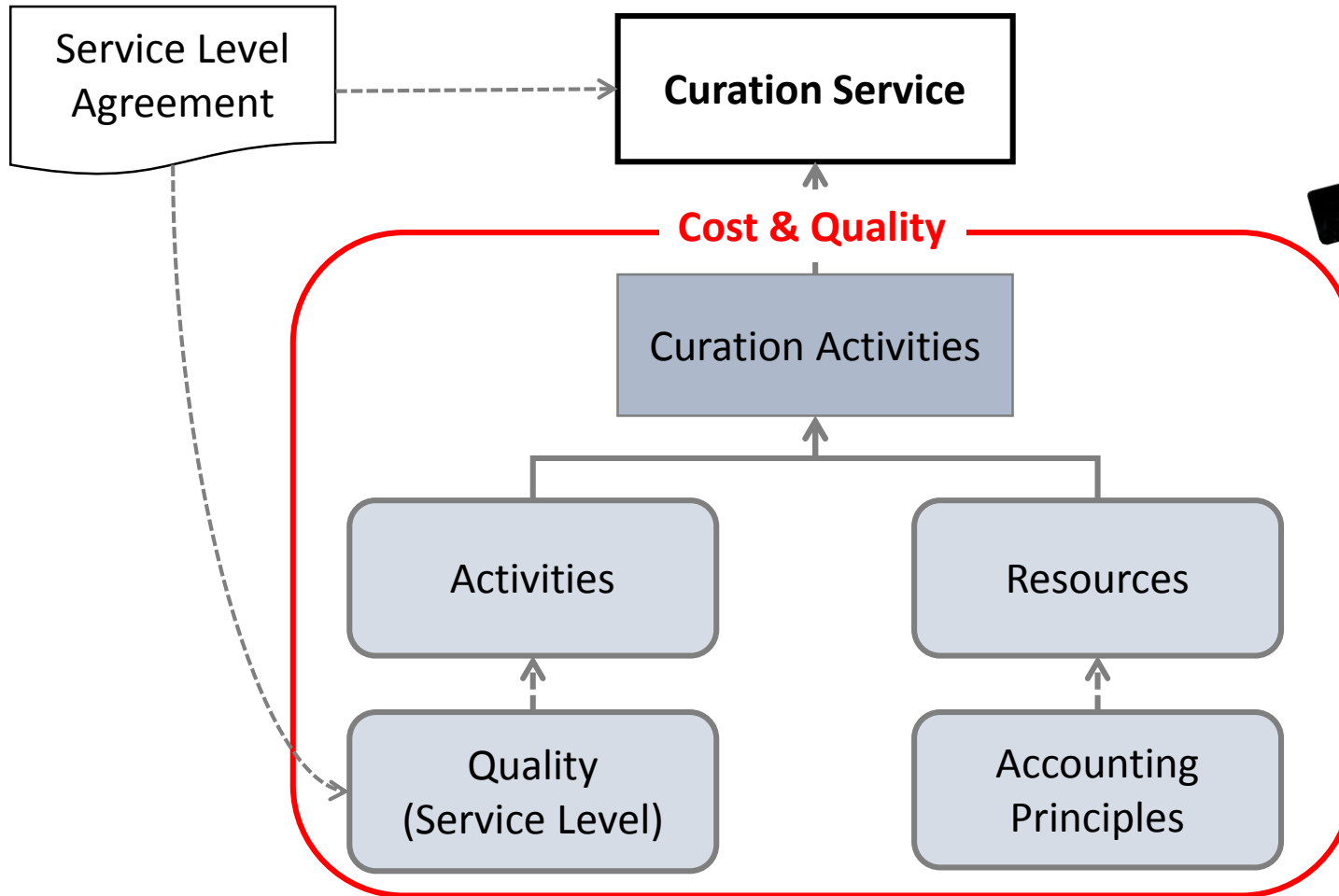
	free	basic	premium
	\$0	\$27,999	\$44,999
Free software license (AGLPv3)	✓	✓	✓
Installation documentation	✓	✓	✓
Community forum support	✗	✓	✓
Installation technician	✗	<b>on-site</b> plus travel expenses	<b>on-site</b> plus travel expenses
Dedicated telephone and email support	✗	<b>3 months</b> plus optional annual maintenance	<b>3 months</b> plus optional annual maintenance
Secure remote support	✗	<b>3 months</b> plus optional annual maintenance	<b>3 months</b> plus optional annual maintenance
IT department liaison	✗	✓	✓
Storage and network integration	✗	✓	✓
Backup procedure review	✗	✓	✓
Scalability testing and optimization	✗	✓	✓
Administrator and end-user training	✗	✓	✓
Integration with supported systems (e.g. AtoM, Dspace, Archivist Toolkit)	✗	<b>\$4,999</b> per system	<b>\$4,999</b> per system
Pilot project assistance (incl. source system, metadata, workflow and format analysis)	✗	✗	✓
Institutional digital preservation status report and recommendations for next steps	✗	✗	✓

# Comparable Cost Data?

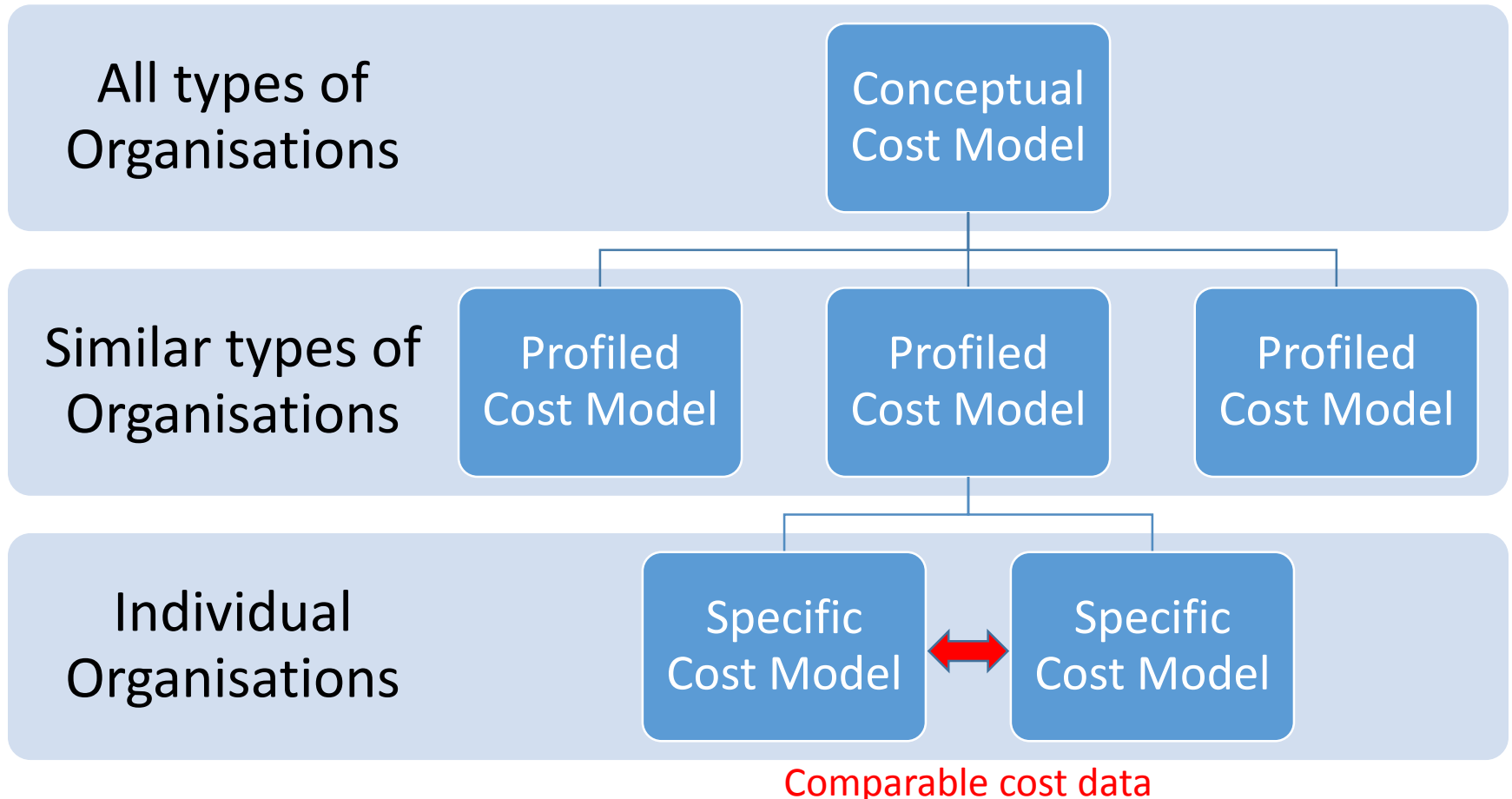


- Clear (standardised?) definitions
  - Activities/Services
    - Service Level (Quality)
  - Resources (cost structure)
    - Direct cost
      - capital (purchases)
      - labour (staff)
    - Indirect cost (overhead)
    - Time

# Conceptual Cost Model



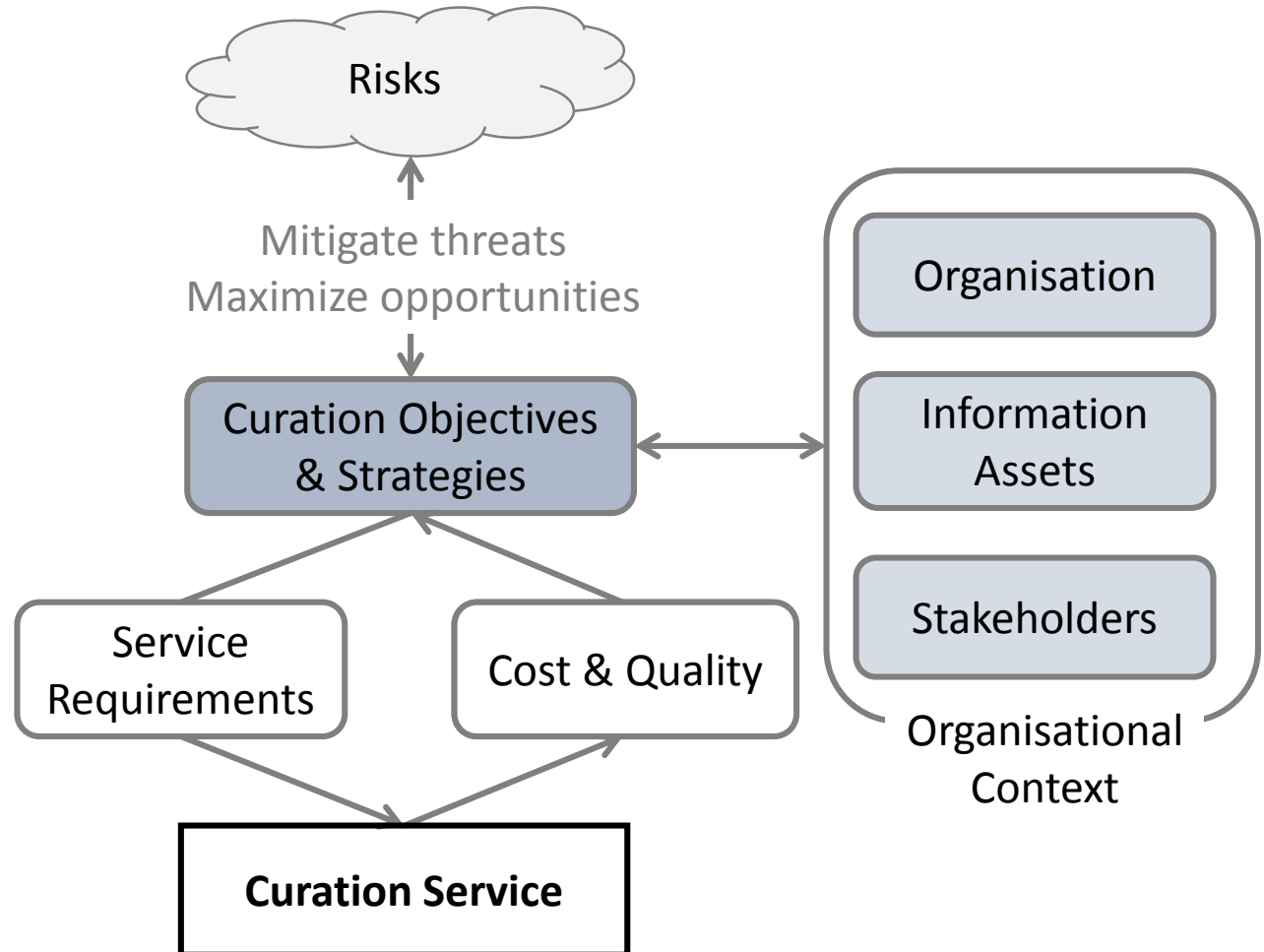
# From Conceptual to Specific



# Costs and Benefits of Service



# Conceptual Cost & Benefit Model



# The Conceptual Model



- Clarifies roles and responsibilities
  - Facilitates discussion of costs and benefits of curation from various perspectives
  - Identifies stakeholders' needs for financial information and tools
- Provides a framework for developing tools that
  - Output comparable cost of curation services
  - Analyse benefits and value of curating information assets

# Introduction to the Economic Sustainability Reference Model (ESRM)

The ESRM maps out the key elements of the problem space planners face when designing a sustainability strategy for their digital curation activities.

It focuses on the general concept of a sustainability strategy, breaks it down into its key components, and draws planners' attention to the properties of those components most relevant for economic sustainability.

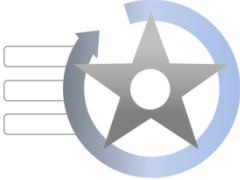

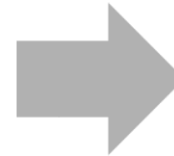




Blue Ribbon Task Force on Sustainable Digital Preservation and Access



An Economic Sustainability Reference Model (ESRM)



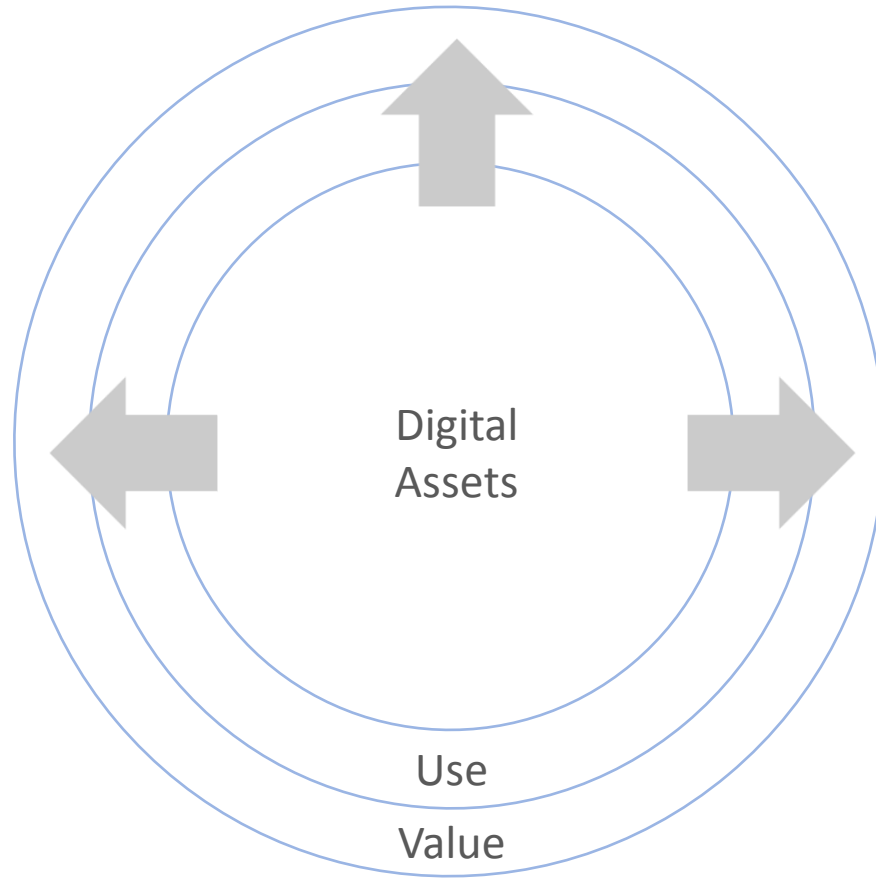
Digital Curation Sustainability Model (DCSM)



...?

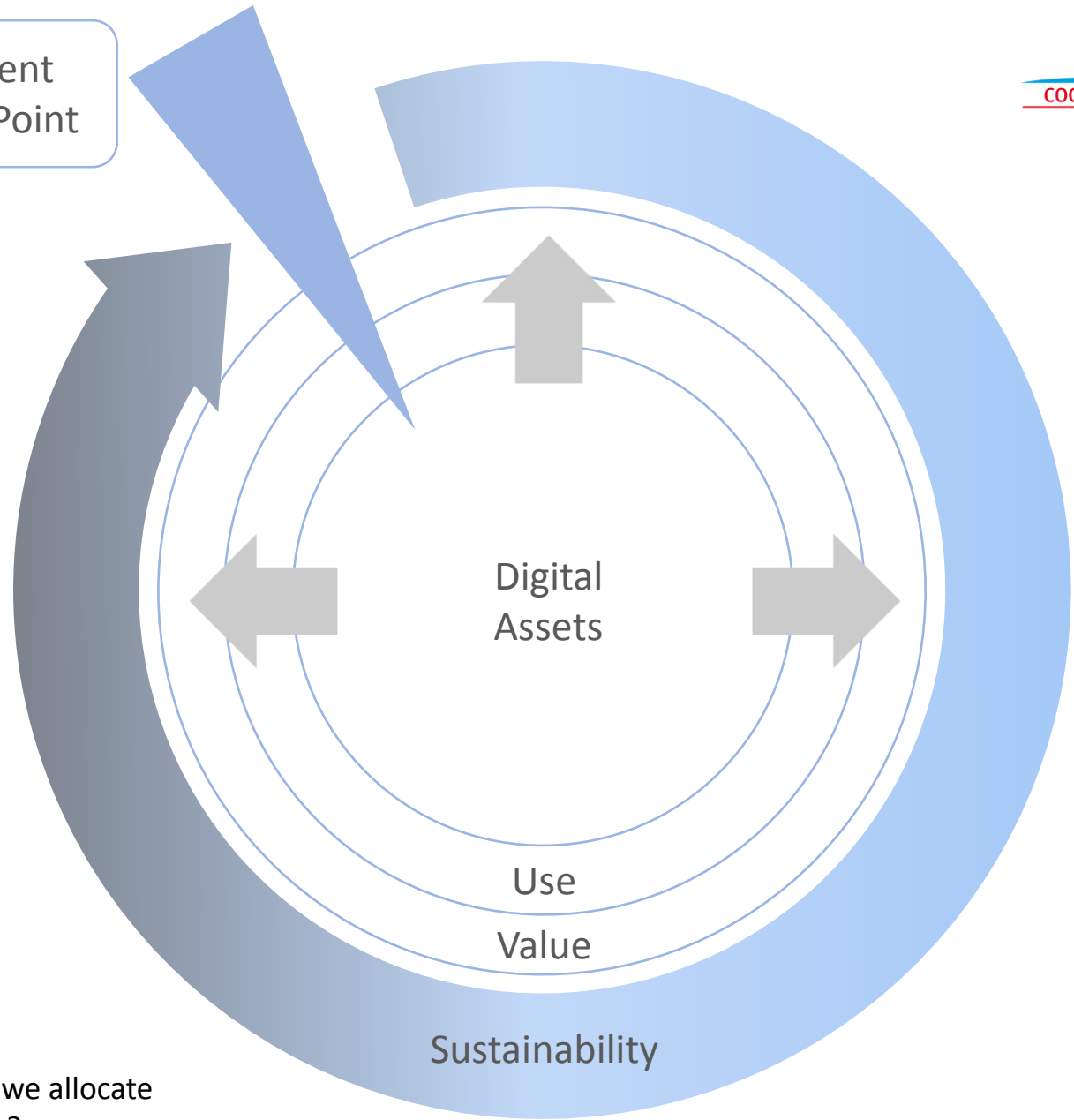


Curation Costs Exchange (CCEX)



Digital Curation

Investment  
Decision Point



The Sustainability Lifecycle ... do we allocate more resources to bridge the gap?

STAKEHOLDERS

DEMAND

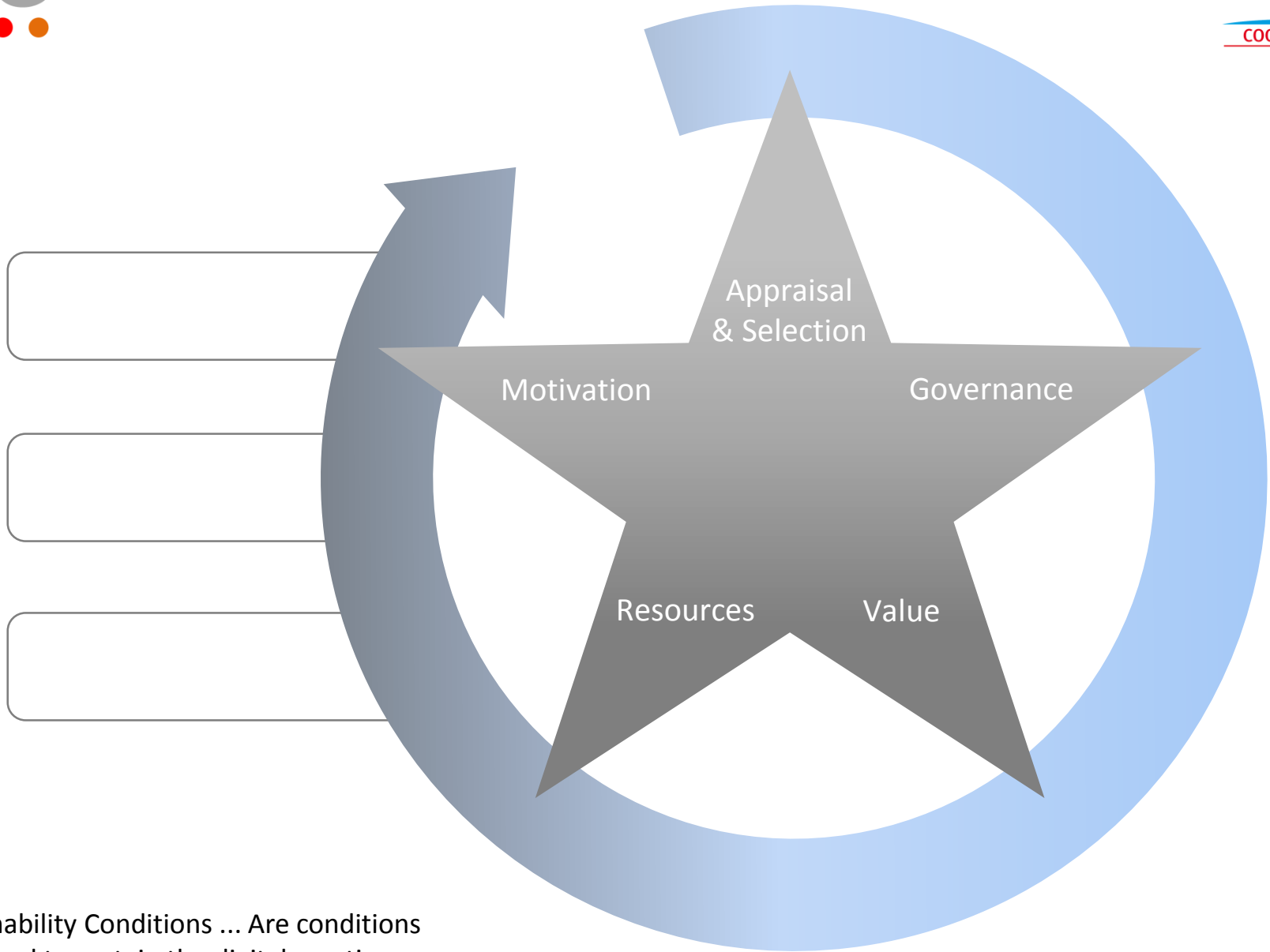
ORGANISATION

SUPPLY

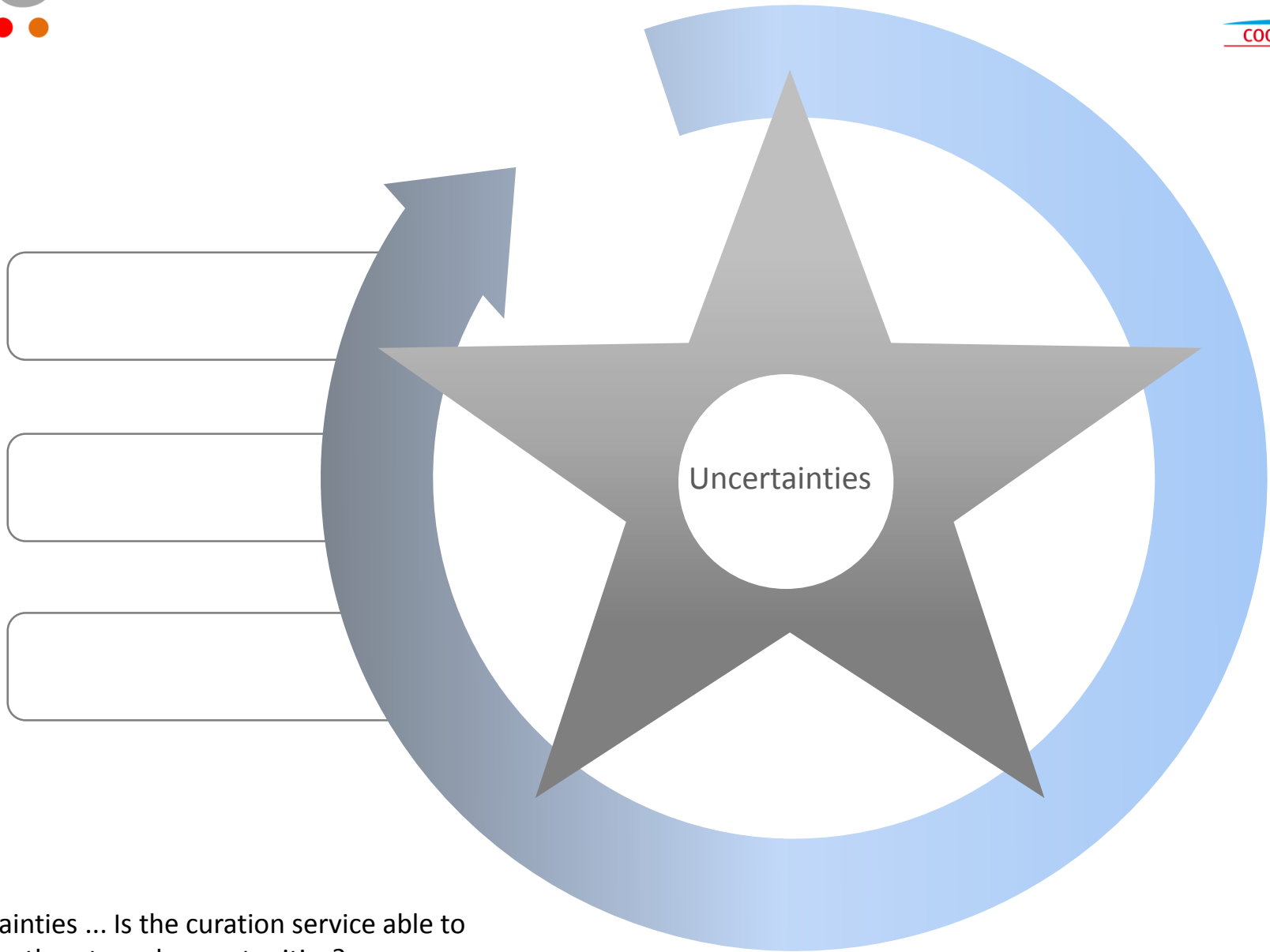
ASSETS

GOODS

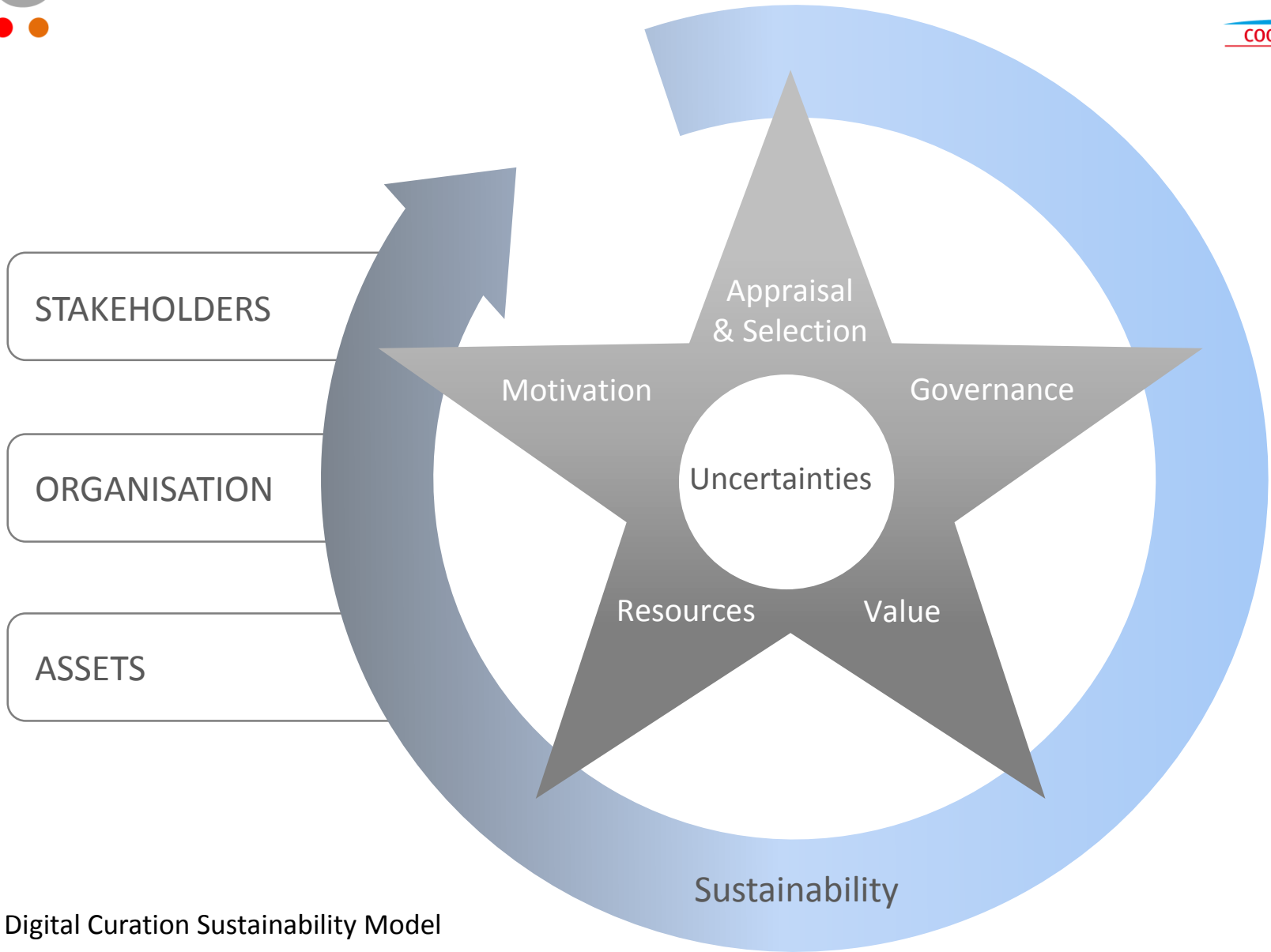
Key Entities ... do we have a good enough understanding of these entities in relation to digital curation activity?



Sustainability Conditions ... Are conditions optimised to sustain the digital curation service?



Uncertainties ... Is the curation service able to adapt to threats and opportunities?



The Digital Curation Sustainability Model

### Digital Curation Sustainability Self-Assessment Tool

Resources					
Are sufficient resources in place to achieve long-term goals?					
#	Questions	Responses	Current Issue Level	When Might This Change?	New Issue Level
20	Are functioning agreements in place to transfer funds and/or other resources from those who are willing to pay to those who are able and willing to curate?				
21	Is the mechanism for payment or transfer of other resources arranged such that it is effective, robust and reliable?  (e.g. pricing, fees, philanthropic donations, effort)				
22	Are curation activities organised and managed to make the best and most efficient use of the funds or resources received?				
23	Can sufficient human resource with adequate capability be employed to ensure effective curati				





